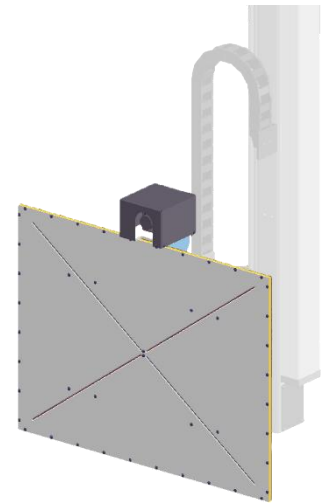


Description

The NightVision system is a driver assistance system developed to support the driver during dawn and night. Even in bad visibility conditions, it can detect possible collision objects with an infrared camera and alerts the driver when they are in the driveway.

To locate the objects reliably, a directional calibration of the infrared camera in the vehicle has to be done. For this, a calibration target which generates a thermal reference pattern is used. This target is brought into a defined position in front of the centered vehicle. By using the reference pattern, the NightVision camera in the vehicle can determine the correct orientation so that it can be adjusted accordingly.

The camera at the target is used to adjust the calibration system if necessary.



NightVision calibration target (example, column greyed-out)

Benefits for our customers

- NightVision calibration in the same process as the headlight aiming or other calibrations.
- Heating wire temperature up to 70 °C.
- Precise and reproducible positioning of the camera through camera and master gauge.

Technical Data

	Features, functions etc.
Size of calibration target (H x W x D)	According to customer's specification, e. g. 650 mm x 860 mm x 37 mm
Weight of calibration target	Approx. 15 kg, depending on model
Power supply	5-12 VDC
Power consumption	20 W
Heating wires	< 70 °C (firmly adjustable or flexibly programmable) Layout: diagonal, crossed
Integrated camera	VisiCon DigiCam 4.2 b/w front with 8 mm lens (B252099)
Ambient temperature	0 °C-40 °C

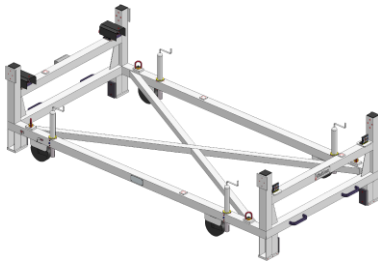
Components



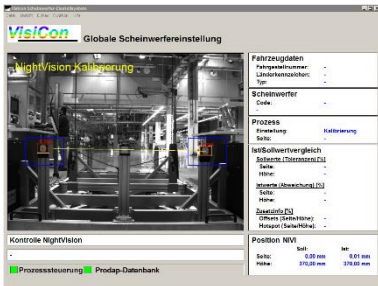
Centralizer: For a correct and reproducible positioning of the vehicle.



Gantry: With traversable column to mount and position the Night-Vision target.



Master gauge: To check the correct positioning of the calibration target.



Calibration software (process control)